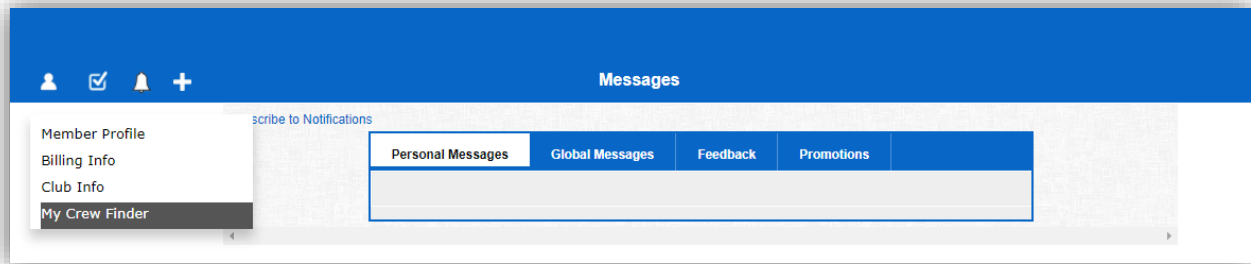


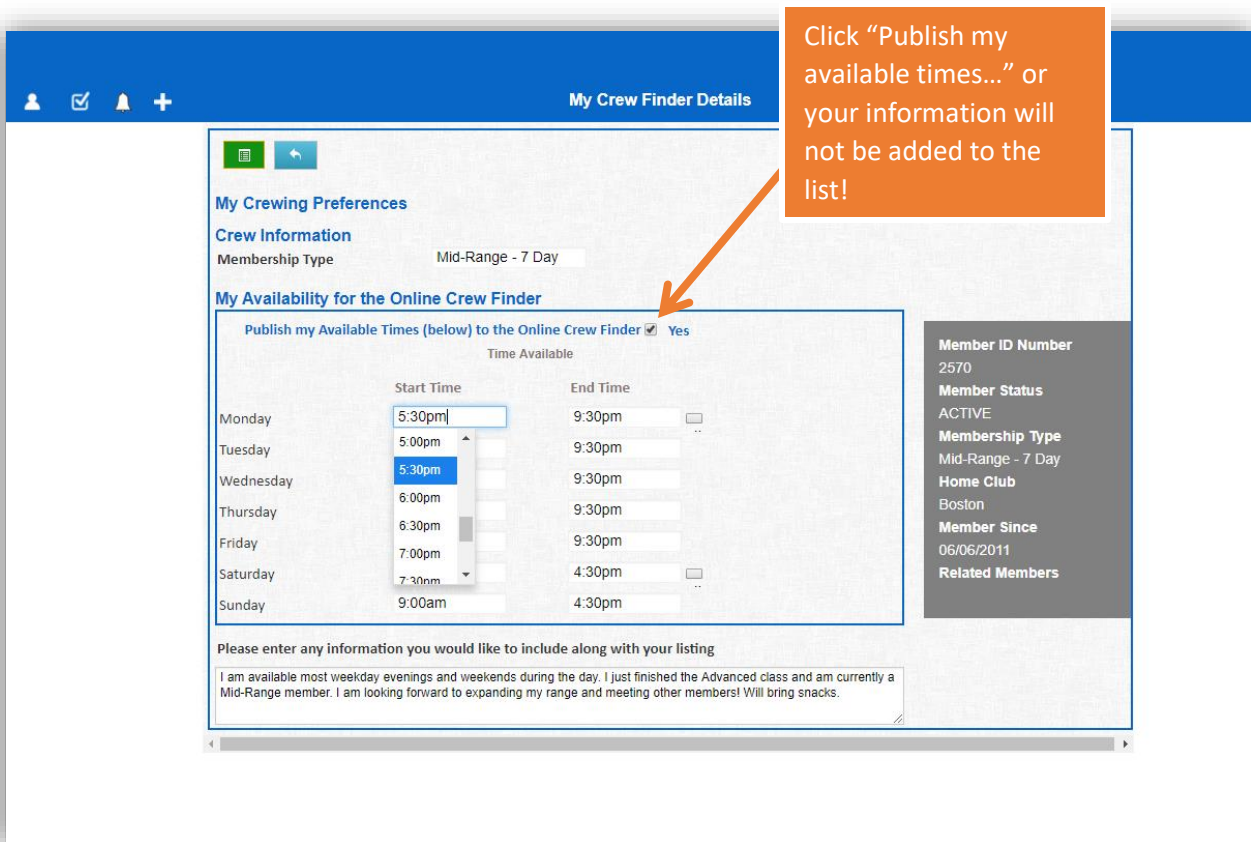
USING THE BSC CREW FINDER

We are excited to launch our new Crew Finder to help you get the most out of your BSC membership. The Crew Finder should help increase your time on the water and find new sailing partners. This feature is available to current members and Learn to Sail or Macro students with an active student membership.

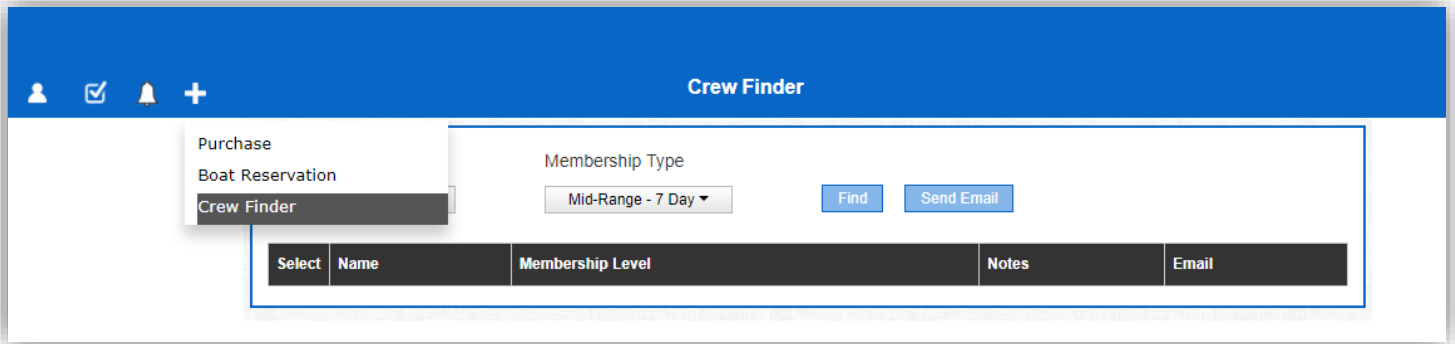
1. Login to the [Clubhouse](#) and navigate to **My Crew Finder**.



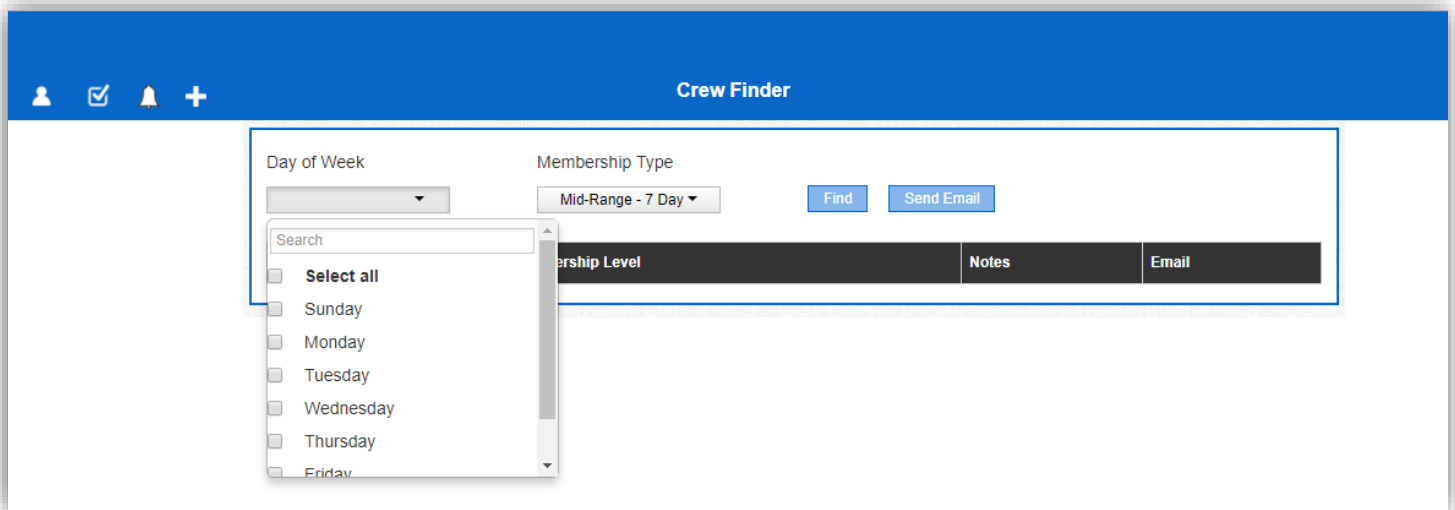
2. Your membership level will autofill. Add the times you are generally available and a note about your sailing experience, availability, or anything else you would like to include with your posting. You can come back and change it whenever you would like. **Be sure to click "publish my available times" to add yourself to the crew finder.**



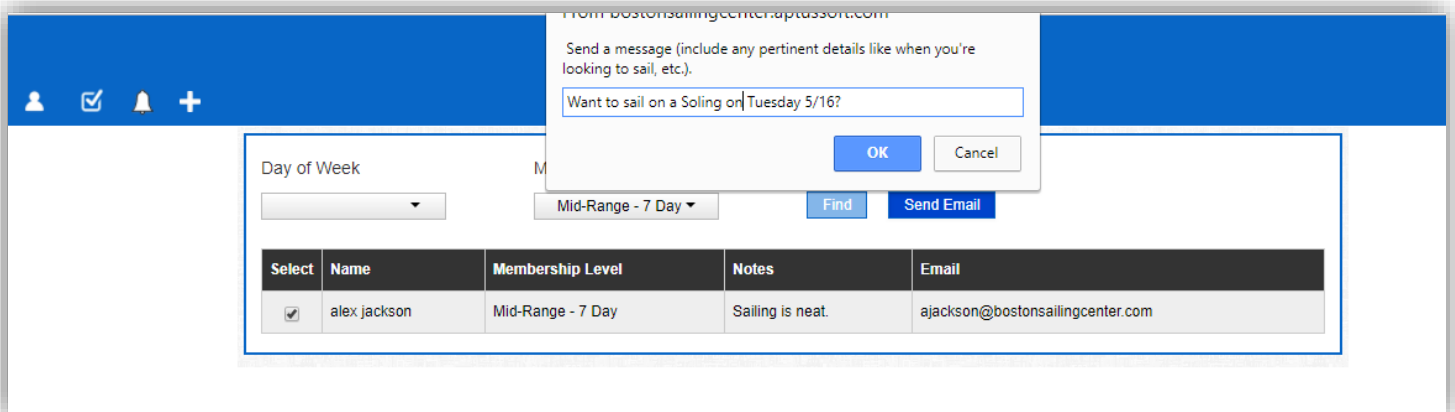
3. Navigate to the **Crew Finder** to see your posting and others. (You'll have to click your membership and the days you chose to see your own posting).



4. Change your search parameters to view individual days or memberships, or "select all" to see everyone.



5. To send a note, check a single name or as many as you want! Click **Send Email** and write a note with the day and time of your reservation, what type of boat, and so forth. An email will send to the selected members and they can respond directly to you.



It's as simple as that! If you have any questions about the crew finder, please contact the office at 617-227-4198 or shoot an email to info@bostonsailingcenter.com. We're happy to help.

See you on the water soon!